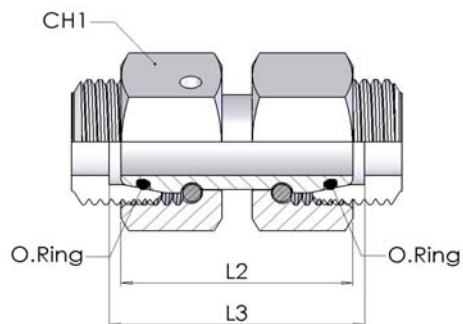
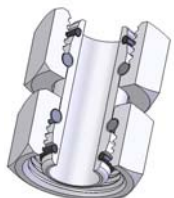


## 7380 Прямой соединительный адаптер с уплотнительными кольцами

Straight coupling with O.Ring



W.P.		part number	Ø Tube	Dimension			O.Ring*	
bar				L2	L3	CH1	mm	
L	315	7380-06L	6	34	35	14	4x1,5	
		7380-08L	8	34	35	17	6x1,5	
		7380-10L	10	36	37	19	7,5x1,5	
		7380-12L	12	36	37	22	9x1,5	
		7380-15L	15	39	40	27	12x2	
		7380-18L	18	40,5	41,5	32	15x2	
	160	7380-22L	22	45	46	36	20x2	
		7380-28L	28	47	48	41	26x2	
		7380-35L	35	53	56	50	32x2,5	
		7380-42L	42	53	57	60	38x2,5	
S	630	7380-06S	6	37	38	17	4x1,5	
		7380-08S	8	37	38	19	6x1,5	
		7380-10S	10	41	43	22	7,5x1,5	
		7380-12S	12	42	44	24	9x1,5	
		7380-14S	14	45	48	27	10x2	
	400	7380-16S	16	46	49	30	12x2	
		7380-20S	20	55	59	36	16,3x2,4	
		7380-25S	25	58	65	46	20,3x2,4	
		7380-30S	30	62	71	50	25,3x2,4	
	315	7380-38S	38	67	82	60	33,3x2,4	

\* - Temperature range without pressure reductions with connections fitted with O.Ring in NBR (standard) and FPM (to order):  
NBR(Perbunan): from -35° to +100°C - FPM (Viton): from -25° to +120°C